

# Lambda-DNA *Hind*III Digest



“a world of learning”

Lambda-phage DNA is produced in the bacterium, *E. coli*. After purification, the double stranded DNA (48,502 base pairs) is digested with the restriction endonuclease *Hind*III to yield eight fragments of the sizes shown in the table.

Band	Base Pairs	Distance (mm)
1	23,130	
2	9,416	33
3	6,557	39
4	4,361	
5	2,322	55
6	2,027	57
7	564	78
8	125	

The distances indicated in the table were obtained by running 10µL of G42.60 on a 0.8% agarose gel in TBE buffer at 100V.

Cohesive ends on fragments 1 and 4 cause them to associate. In most cases, this means band 4 is not visible and band 1 tends to be diffuse and difficult to fix in position.

The cohesive ends can be dissociated by heating to 65°C for five minutes before electrophoresis.

## Product Details

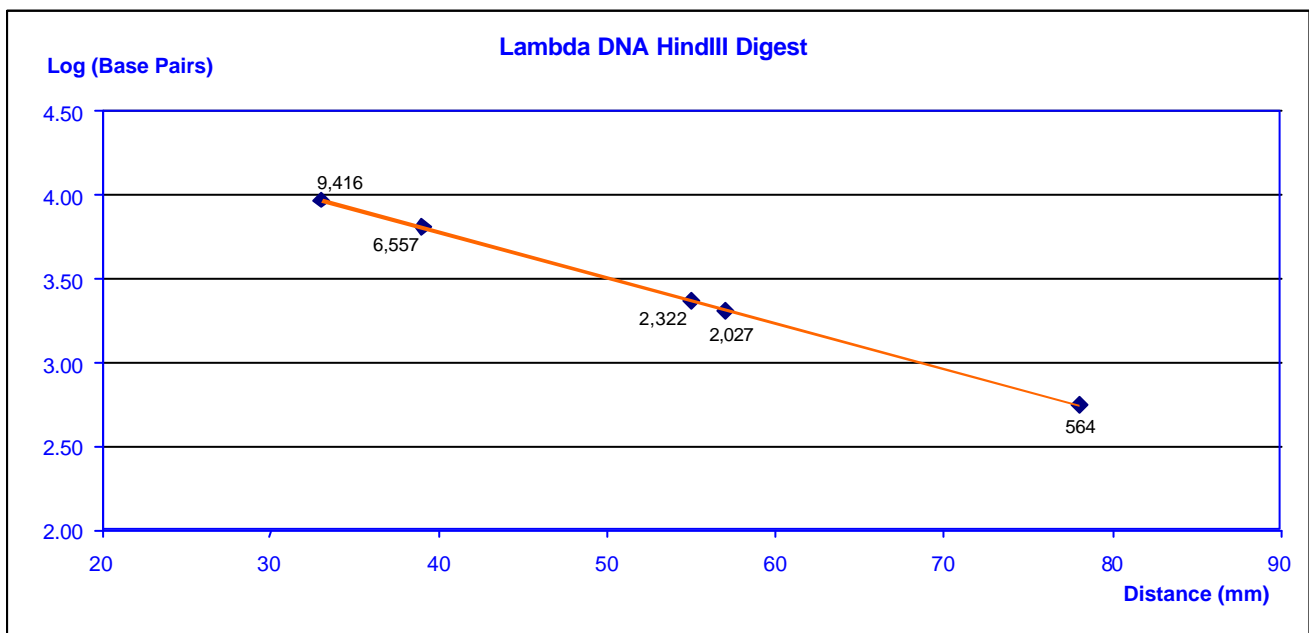
Product Code: G42.60

Description: λ-phage DNA *Hind*III digest, molecular weight marker, 10µg in 50µL loading buffer.

Loading Dyes: Bromophenol Blue (leading) and Xylene Cyanol (trailing).

Storage: Shipped under ambient conditions. Store at 4°C upon receipt and use within 4 weeks. For longer term storage, keep at -20°C and use within 6 months. Avoid repeated freeze-thawing as this may shear high molecular weight DNA fragments.

Use: Recommended conditions for electrophoresis are 10µL on a 0.8% agarose gel in TBE buffer. Stain with concentrated Methylene Blue (MC44.2) and allow to stand for several hours so the loading dyes diffuse away.



Linear plot of Log (Base Pairs) versus distance.

**Southern Biological - A Division of Cogitamus Pty Ltd**

ACN 097 468 954 ABN 25 838 926 933

19-21 Worrell Street or PO Box 57 Nunawading Victoria 3131 Australia

Phone: +61 3 9877-4597 Fax: +61 3 9894-2309

Email: [sales@southernbiological.com](mailto:sales@southernbiological.com) Web: [www.southernbiological.com](http://www.southernbiological.com)